



Fall 2023

Newsletter



House Project

How many kids can say they have lived in both of their parent's childhood homes?!

Well, our kids can!

We are currently living in Kimberly's parents' house while our home farm is going through a major renovation.

The process is taking longer than we wished, but the daily progress is fun to watch. We hope to move back home by the end of harvest.

" We will not do what we refuse to dare; we will not find what we refuse to seek."
Theodor Roszak



Farm Focus

The 2023 crop year has been an emotional rollercoaster. This year marks the 4th consecutive crop affected by drought, and each year seems to be getting more severe.

A noticeable difference from prior years is the scattered nature of the rainfall. Parts of Butler County have received only 6 inches of rain all growing season, while areas in Franklin and Floyd Counties have received more than double that amount. I have driven from one field that looks green and lush to another field just a few miles down the road that looks like a desert.

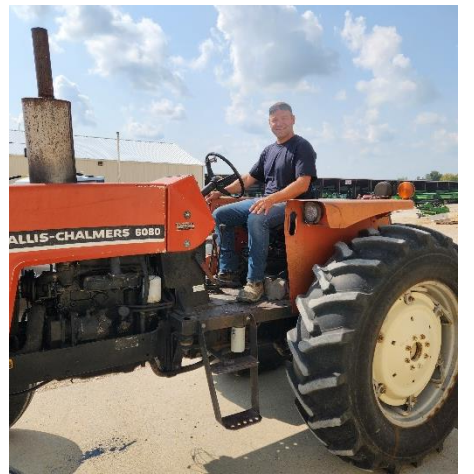
I think one tool to help offset weather risk in the future is to spread a farming operation over a

larger geographical area (easier said than done, I know).

Along with dry weather, we've experienced an "all over the board" market, which sort of makes the price charts resemble the weather maps. These challenges are as old as time, because farming is always about weather and price.

It looks like the harvest in our areas will be early and dry this year, but the results on the yeild monitor won't take away from the joy of harvesting what we've worked hard all year to raise. As the saying goes, there is always next year.

I hope this letter finds you well.
Sincerely, Mark



Farm Flashback

The year was 1983. A gallon of gas cost \$1.24. The new Mario Brothers video game was all the rage. Mark was 2 years old. It was also the year that the Rogers family bought four 6080 Allis Chalmers tractors (Mark's grandpa bought two and Mark's dad bought two). They were

handy, dependable tractors used for planting, cultivating, grain hauling and manure spreading. Two of the tractors had front wheel assist (a big innovation in those days). Mark remembers hearing Dean Deike (owner of Deike Imp) say that the only problem with the 6080 tractors

were that they didn't make enough of them. Forty years later, we traded off the last of the four tractors, making it the first time in Rogers' history that there are no orange tractors on the farm. We marked the occasion with Drew, Dwight and Darren taking a picture in front of it.



German Family

This summer we had some special guests from Germany. Mark's foreign exchange sister, Christina, and her family spent three weeks in Iowa. This is the first that we have been together in five years. They were quite surprised with all the changes the farm has gone through since their last visit.

Family Tradition

We stumbled upon this recipe over the summer, and it quickly became a family favorite!

Pineapple Ice Cream

Vanilla ice cream
Pineapple juice
Frozen pineapple
Fresh pineapple (optional)

Combine all in blender. Since there are no exact measurements with this recipe, you can adjust the pineapple to your liking.

Enjoy one spoonful at a time.

